



42nd BLACKLINE PATOS ISLAND RACE

Sidney North Saanich Yacht Club
1949 Marina Way, North Saanich, B.C.
March 29 & 30 2025



Notice of Race (NoR)

Nearshore Course

Version 1.2 – January 22nd, 2025

The Sidney North Saanich Yacht Club will be hosting its 42nd Patos Island Race on March 29th to 30th, 2025.

The course will be around fixed marks and islands with an approximate length of 20-30 miles depending on wind conditions targeting an approximate duration of 9 hours. The nearshore course is open to yachts with PHRF BC ratings of 90 or greater. There will be a double handed division if a four boat minimum is attained.

SNSYC will attempt to provide moorage for participating yachts. Larger/deep draft vessels may need to secure moorage at local marinas.

1 SCHEDULE

	Date	From	To
Registration Packages Available	Friday March 28 th	16:00	20:00
All-inclusive Buffet Dinner		17:30	19:30
Weather and Currents Briefing		19:30	20:00
Skippers Meeting		20:00	
Pancake and Sausage Breakfast	Saturday March 29 th	07:00	08:00
Warning Signal for first start	(no earlier than)	10:15	
Complimentary Chili & Buns	Sunday March 30 th	00:01	09:00
Time Limit expires		11:00	
Hot Breakfast		08:00	11:00
Awards Presentation		11:00	

All social activities are held at SNSYC. The race start is in the vicinity of the Sidney downtown waterfront.

2 RULES

- 2.1 The event is governed by the rules as defined in *The Racing Rules of Sailing*, available at "[RRS](#)". The prescriptions of Sail Canada apply, available at "[Sail Canada](#)".
- 2.2 The Rules of PHRF BC, available at "[PHRF BC](#)".
- 2.3 Boats shall comply with the safety equipment requirements of its national safety authority.
 - 2.3.1 Boats shall carry a marine VHF transceiver with DSC, capable of transmitting and receiving on Canadian channels.
 - 2.3.2 Boats shall carry charts appropriate for the racing area (see appendix A) in either paper or electronic form.
- 2.4 All Monohull boats are strongly recommended to comply with Category 4 of the 2024–2025 World Sailing Offshore Special Regulations for Monohulls with Canadian Prescriptions available at "[OSR 4 mono Can](#)".
- 2.5 All multihull boats are strongly recommended to comply with Category 4 of the 2024–2025 World Sailing Offshore Special Regulations for Multihulls with Canadian Prescriptions (available at "[OSR 4 multi Can](#)"). The following amendments are for multihulls only:
 - 2.5.1 3.14.2, append "On a boat with no lifelines the use of a harness tethered to jackstays and/or clipping points (see 4.04) is recommended at all times when not below deck."
- 2.5 The International Regulations for Preventing Collisions at Sea (IRPCAS) shall replace the relevant sections of Part 2 of the RRS between sunset and sunrise. IRPCAS is available at "[IRPCAS](#)".
- 2.6 Race participants will be required to download the Kwindoo Tracking system on their smart phone. This will require each boat to maintain a smart phone with data (including the USA) and a means of keeping the device charged throughout the race duration.
- 2.7 Boats entered as a Double-Handed crew are allowed to use self-steering and/or autopilot mechanisms for sail changes and other situations, where having one crew member assigned to steering the yacht may compromise the safety of crew and craft. This changes RRS 52.

3 SAILING INSTRUCTIONS

- 3.1 The sailing instructions for the nearshore course will be available after 08:00 on March 1st at <https://patosislandrace.com/>.

4 COMMUNICATION

- 4.1 The official notice board is located in the entrance of the SNSYC clubhouse.

5 ELIGIBILITY AND ENTRY

- 5.1 The event is open to all boats with a valid 2025 PHRF BC certificate and a PHRF rating of 90 or greater. 2025 PHRF NW certificates will be accepted and will be normalized to PHRF BC regulations.
- 5.2 Division splits will be announced at the skippers meeting.
- 5.3 Eligible boats may enter by registering online at <https://patosislandrace.com> together with the required fee by 23:59, March 24th, 2025.
- 5.4 The number of boats entered in the event (all courses) is limited to 55. Boats will be placed on a waiting list once there are 55 entries.

6 FEES

- 6.1 Entry fees are as follows:

Class	Early Entry Fee until February 16 th , 2025	Standard Fee
Nearshore Course	\$100 Cdn	\$135 Cdn

(includes one Friday Buffet dinner ticket and one Breakfast ticket)

- 6.2 Social Activity fees:

All-inclusive Buffet Dinner (Friday)	\$39.00 / person
Pancake & Sausage Breakfast (Saturday)	\$10.00 / person
Hot Breakfast w/coffee & juice (Sunday)	\$10.00 / person

7 CREW LIMITATIONS

- 7.1 As per OSR 6.04, At least annually the crews shall practice the drills for:
- crew-overboard recovery, and
 - abandonment of vessel.

8 COURSES

- 8.1 The race start is in the vicinity of the Sidney downtown waterfront.
- 8.2 The Race course will use fixed marks and islands in the vicinity of Sidney. The Sailing Instructions will define a number of courses and the race committee will select the course to be used no later than 30 minutes before the start of the race. The selection will be based on weather and tide with the intent of having a race duration of approximately 9 hours. Appendix A shows the Racing Area and example courses. Competitors are strongly advised to check the appropriate

charts for navigational hazards.

9 PENALTY SYSTEM

9.1 RRS 44.1 will apply (Two-Turns penalty).

10 RISK STATEMENT

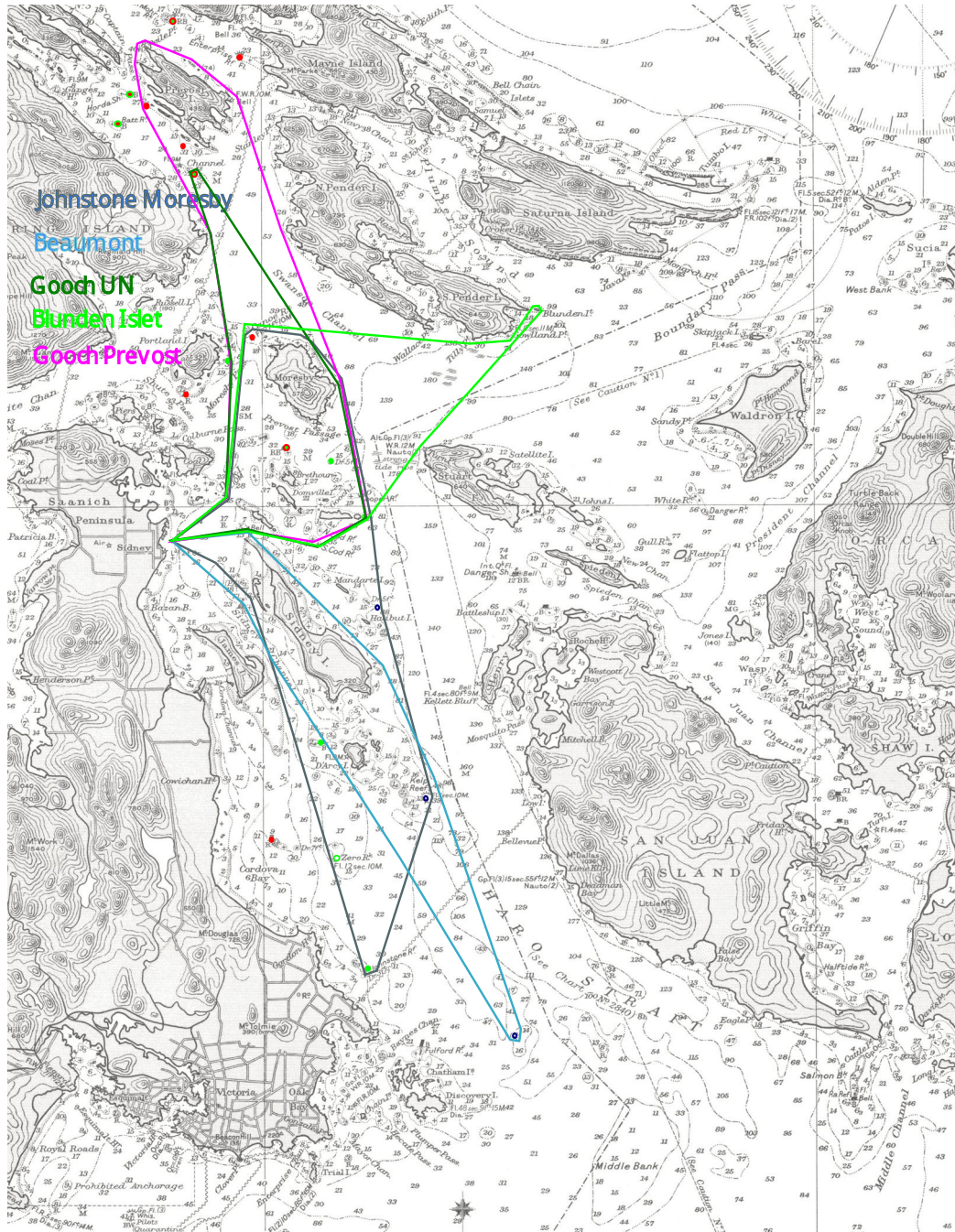
10.1 RRS 3 states: 'The responsibility for a boat's decision to participate in a race or to continue *racing* is hers alone.' By participating in this event each competitor agrees and acknowledges that sailing is a potentially dangerous activity with inherent risks. These risks include strong winds and rough seas, sudden changes in weather, failure of equipment, boat handling errors, poor seamanship by other boats, loss of balance on an unstable platform and fatigue resulting in increased risk of injury. **Inherent in the sport of sailing is the risk of permanent, catastrophic injury or death by drowning, trauma, hypothermia or other causes.**

11 INSURANCE

11.1 Each participating boat shall be insured with valid third-party liability insurance with a minimum cover of \$2,500,000 Cdn per incident or the equivalent. A hard copy of the insurance policy must be on board while racing.

12 FURTHER INFORMATION

12.1 For further information please contact:
Kevin Crawford, patoschair@snsyc.ca ph. 604-897-5250



Not to be used for Navigation. Example courses only, to show racing area.